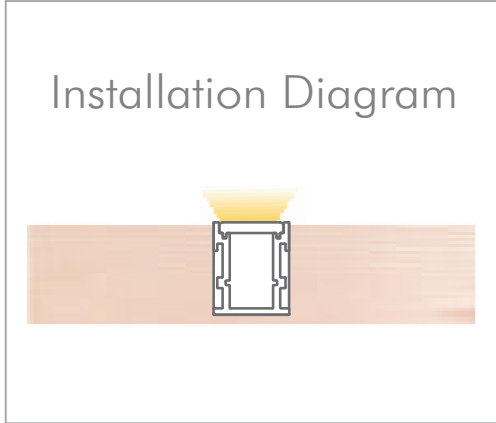


In Ground Mounting Channel

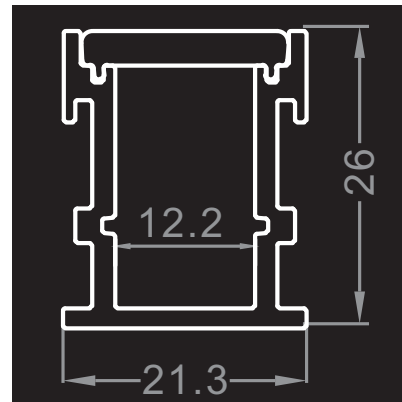
Aluminum Channel for Flexible LED Strip

IG-
84102



Specifications

- Material: Anodized Aluminum 6063
- Color: Silver / Black / White
- Cover: Regular PC diffuser (milky / transparent / black)
- Width*Height: 21.3*26.0mm [0.84*1.02in.]
- Max. Length: Profile 3M [9.84ft.], cover 3M [9.84ft.]
- End cap: 2pcs/unit (1 pc with hole, 1 pc without hole)
- Clip/Screw: 2pcs/M [2pcs/39.4in.]
- Match Strip Width: 8/10/12mm [0.31/0.39/0.47in.]
- Linear LED Density@milky cover: ≥ 120LED/M/Row [36LED/ft.]
- Light Output Rate of Finished Product: 20-30%
- Length of Finished Product: Strip Length+ 13mm [0.51in.]



Part Number

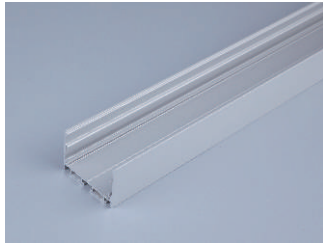
MODEL	CHANNEL FINISH	LENS	QUANTITY
IG-84102	WH White SI Silver BK Black	C Clear Lens F Frosted Lens M Milky Lens	39 Available in 1 meter (39") increments

In Ground Mounting Channel

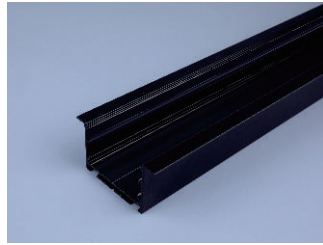
Aluminum Channel for Flexible LED Strip

IG-
84102

Aluminum Options



Silver

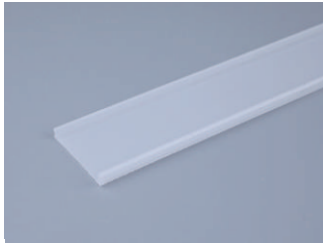


Black

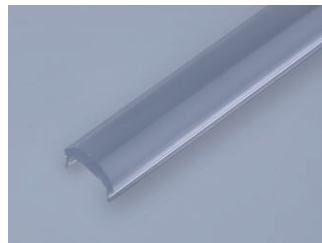


White

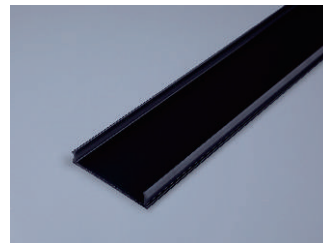
Diffusion PC Cover Options



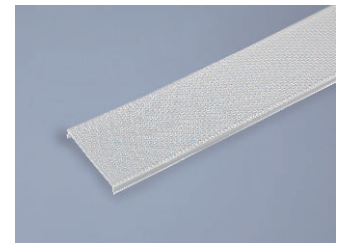
Milky Transmission:
83%For Dot-free



Transparent Transmission:
93%For High transmittance



Black Transmission:
60%For Decoration



Prismatic Transmission: 83%
For Anti-glare (UGR < 19 optional)

In Ground Mounting Channel

Compatible LED Strips

IG-
84102

ULHE-24-9519S
ULHE-24-9522S
HEFC-24-9687S
OSMV-24-FE62S
TDFP-414S
ULPS-24-9033S
HEFC-24-9677S
ULHE-24-9561S
HEP-24-L624S
CMLP-24-9688S
TUNE-24-LN28S
HESC-24-9678S
ULPS-48-LN21S
DTWP-24-LN27S
CMLP-24-8707S
CMLP-24-FE78S
CMLP-24-9023S